



KENTUCKY

MUSIC

HALL OF FAME
AND MUSEUM

**TEACHER STUDY GUIDE
AND EDUCATION PACKET**

CONTENTS

INTRODUCTION	3
DIAGRAM OF “KENTUCKY MUSIC HALL OF FAME AND MUSEUM”	4
EDUCATION CONTENT CONNECTIONS & EXHIBIT GUIDES	
• ELEMENTARY	5
• MIDDLE LEVEL	11
• HIGH LEVEL	17
CAREER OPTIONS REPRESENTED AT THE KENTUCKY MUSIC HALL OF FAME AND MUSEUM	23
SUGGESTED READING	24
EDUCATION CONSULTANT & DEVELOPMENT	25

INTRODUCTION

Welcome to the Kentucky Music Hall of Fame and Museum. As you tour this 16,600 square foot facility, you realize that music is as much a part of Kentucky as horse farms and hollows. The genres of song, folk, gospel, bluegrass, blues, jazz and country are as varied as Kentucky's scenic landscapes. The contributions that Kentucky has made to American music are immeasurable.

While the various branches of the country music tree certainly take center stage at the museum, all forms of music are honored, from the unadorned and untrained mountain music performed on front porches to the refined and ever expanding boundaries of today's sounds.

The Kentucky Music Hall of Fame and Museum does more than simply tell this story. The museum involves visitors in the engrossing epic by bringing to life the core components of Kentucky's music, the song, the singer, the stage and the scene.

Included in the museum is an instrument room, where visitors see, touch, hear and perform; a functioning sound booth, where visitors may sing and record; and a historic timeline with exciting exhibits and dioramas to take the visitor from the beginnings of Kentucky music at "Brush Arbors" to WHAS Radio in the 1940s, to bluegrass concerts on courthouse steps and at ball fields all over the state.

The Hall of Fame includes exhibit cases for instruments, artifacts, costumes and memorabilia, from inductees honored with acrylic induction plaques on glass walls.

There is also a Wall of Stars focusing on other Kentucky music stars, who have not yet made it into the Hall of Fame.

In this unique opportunity to relive Kentucky music history, guests find themselves inspired by masterful artists and foot-tapping sounds, by a respected past and a shining future, and most certainly, by authentic Kentucky charm. And when guests leave the Kentucky Music Hall of Fame and Museum, they'll take with them a song, a smile and a strong sense of place.

This education packet has been developed with a specific focus at each grade level based on the Kentucky Department of Education's Core Content, Program of Studies and Academic Expectations. The Elementary guide emphasizes the elements of the Performing Arts and the Elements of Design. At the middle level, students will connect historical perspectives while High School students will explore career options in the visual and performing arts.

We hope this material will help align your visit to your curriculum. For more information and tour scheduling contact:

1-606-256-1000

Kentucky Music Hall of Fame & Museum
PO Box 85
Renfro Valley, KY 40473

2590 Richmond Road
Mt. Vernon, KY 40456

E-Mail: kymusic@sun-spot.com
Web: www.kentuckymusicmuseum.com

KENTUCKY MUSIC HALL OF FAME AND MUSEUM DIAGRAM

EXHIBIT A

1. Entrance
2. Ticket Counter
3. Bust of John Lair
4. Notable Hall of Fame Sponsors
5. Appreciation Records
6. The Ol' Homeplace Map of Kentucky Performers
18. Museum Shop
19. Visitor Facilities

EXHIBIT B

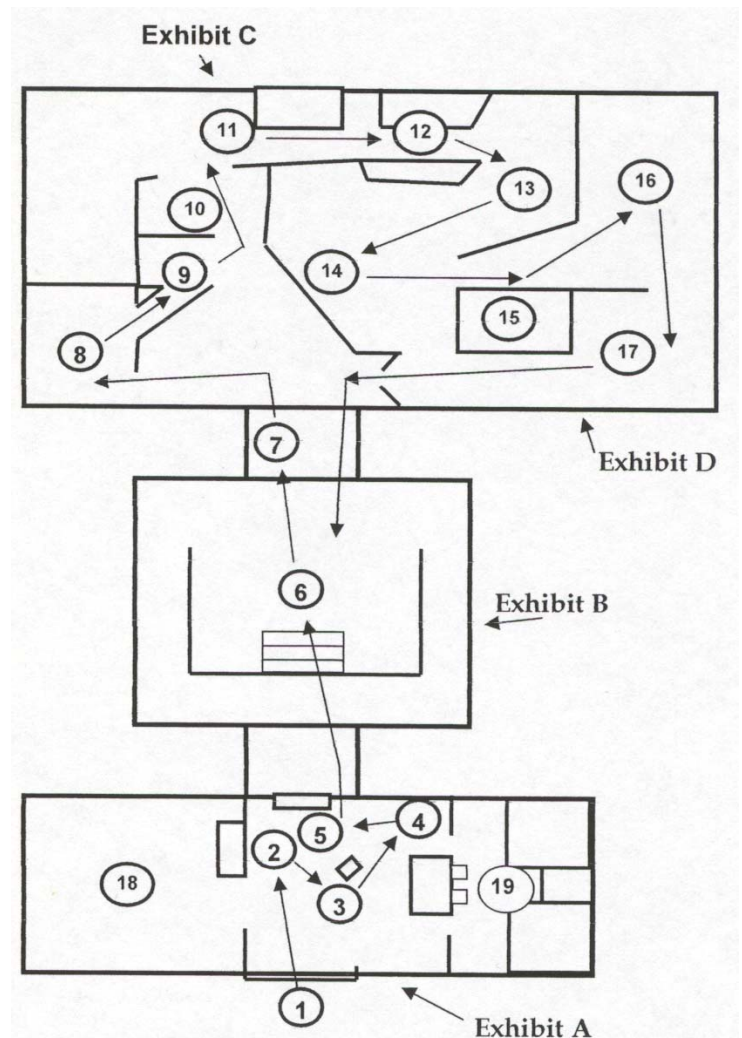
6. Hall of Fame – Tribute 2002 Inductees
John Lair, Osborne Brothers, Tom T. Hall, Loretta Lynn, Grandpa Jones, Merle Travis, Bill Monroe, Jean Ritchie, Bradley Kincaid, Rosemary Clooney, Red Foley, and the Everly Brothers
7. Lionel Hampton Governor's Award for Lifetime Achievement

EXHIBIT C

8. "Kentucky Sings" Video Presentation
9. Old-Time Vignette 1750-1800
10. Brush Arbor Vignette 1800-1850
11. Front Porch Vignette 1850-1920
12. WHAS Radio Station 1920-1930 Broadcast Reception Area
13. Bluegrass 1930-1960 Vehicle and Instruments
14. Time-Line of Performers 1950-2002

EXHIBIT D

15. Studio Recording
16. Transitional Special Collections
17. Music Room Interactive Exhibits



ELEMENTARY EXHIBIT GUIDE
AREA A: THE PORTAL

OVERVIEW

The “*Portal*” of the 16,600 square foot facility is the John Lair, founder of the Renfro Valley Barn Dance, renovated horse stables. It is now home to a quaint stage where you may just find a live performance from a visitor or one of many Kentucky artists sharing a song with a guest. Exhibit features include:

- Renovation Design
- Kentucky Map Identifying Artist’s Home County
- Original Horse Stables
- John Lair Sculpture
- Museum Shop

Academic Expectation	Content Connections
Historic Perspective 2.20	<ul style="list-style-type: none"> • Examine the historical contributions of individuals and groups
Geography 2.19	<ul style="list-style-type: none"> • Use a variety of tools to obtain geographic information
Culture & Society 2.16	<ul style="list-style-type: none"> • Understand similarities and differences in the ways groups and cultures within Kentucky address similar needs and concerns
Visual Art 2.23	<ul style="list-style-type: none"> • Use appropriate terminology to describe works of art (elements, principles, purpose, media, process)
Speaking, Listening, Observing 1.3 1.4	<ul style="list-style-type: none"> • Applying listening, speaking, and observing skills to conduct authentic inquiry tasks

BACKGROUND

Upon entering the “*Portal*” area of the Kentucky Music Hall of Fame and Museum, visitors are greeted by the interior of the original John Lair, Renfro Valley Barn Dance founder, horse stables now listed on the National Register of Historic Places. Built in 1945, the structure retains original materials recycled during renovation by the CMW Architect Firm of Lexington, Kentucky, which is also responsible for the Hall of Fame and Museum design additions and Hacker Brothers Construction of Corbin, Kentucky for building construction.

Design components of interest include plank flooring, which appears to be weathered wood but is actually detailed concrete, three of the original twelve horse stalls which serve as display areas for music-related merchandise in the Museum Shop, wall cabinets displaying vintage sheet music, reproduction LP records which list monetary benefactors and a small performance area reminiscent of a “Barn Dance” stage.

The highlight of the “*Portal*” is the large wooden map representing Kentucky displaying the home county of various musicians, songwriters, singers and music entertainers, past and present. Also, seen in the “*Portal*” area is a sculpted bust of John Lair, by London, Kentucky artist, Jim Handy. Mr. Handy researched various photographic images to create the likeness.

CLASSROOM ACTIVITIES

- Develop a Kentucky map identifying artist’s home county
- After you visit, write letters to your principal describing what you learned
- Develop an “ABC” book on Kentucky music

ELEMENTARY EXHIBIT GUIDE
AREA B: THE HALL OF FAME

OVERVIEW

Stroll through the *Hall of Fame* and see exhibits of the inaugural inductees while their music plays around you along with Lionel Hampton who received the Governor’s Lifetime Achievement Award. Exhibit features include:

- Artifacts Display Cases
- Artist’s Photo Portraits and Facts
- Artist’s Performance Posters

Academic Expectation	Content Connections
Historic Perspective 2.20	<ul style="list-style-type: none"> • Examine the historical contributions of individuals and groups
Culture & Society 2.16	<ul style="list-style-type: none"> • Understand similarities and differences in the ways groups and cultures within Kentucky address similar needs and concerns
Music 2.26	<ul style="list-style-type: none"> • Examine effects of time, place, and personality of music and performance
Drama 2.23 2.24	<ul style="list-style-type: none"> • Use appropriate terminology to discuss elements of production (scenery, costumes, props, sound, music, make-up, and role) • Use of appropriate terminology to discuss elements of performance (character, movements, and vocal expression)
Visual Arts 2.23	<ul style="list-style-type: none"> • Use appropriate terminology to describe works of art (elements, principles, media, purpose, and process)
Inquiry 1.1	<ul style="list-style-type: none"> • Identify information and resources needed to address questions

BACKGROUND

The *Hall of Fame*, which serves as a connector between refurbished Lair stables and the *Museum*, houses exhibit cases for instruments, artifacts, costumes, and memorabilia representing each of the music inductees. Items on loan or donated to the *Hall of Fame* are artistically arranged by Exhibit Design, Jack Rouse Associates of Cincinnati, as are all the exhibit fabrications throughout the *Museum*. The logo design, prominently displayed throughout the facility, is by Malcolm Greer.

Artist’s performance style poster graphics are printed in colored acrylic plaques giving the appearance of vintage show bills. Plaques are arranged on glass walls allowing colored light to shine through from the outside mimicking stained glass. The plaques are permanent, even as additional inductees are included. Large Photo Portraits adorn the space accompanied by biographical facts and accomplishments of each *Hall of Fame* Inductee.

Inductees for 2004 include:

- **Billy Vaughn**-one of the most popular orchestra leaders and pop music arrangers of the 1950s and 60s. Beginning with “Melody of Love” in 1954, Vaughn had a string of easy listening hit singles that continued for over a decade.
- **J.D. Crowe**-known for combining the sounds of Bluegrass, Rock & Roll and Blues into a very distinctive style of his own. The revolutionary sound of his band, The New South, marked a turning point in the sound of Bluegrass music.
- **Coon Creek Girls**-this all girl string band was broadcast over many radio and live shows. A highlight of their career was performing at the White House when President Franklin Roosevelt and First Lady Eleanor Roosevelt hosted a visit by King George VI and Queen Elizabeth of Great Britain.

- **Boots Randolph**-a very influential saxophone instrumentalist in the country music field making brass a part of the “Nashville Sound”. He is perhaps best known for his multimillion selling, “Yakety Sax”.
- **Ricky Skaggs**-having worked and performed with Ralph Stanley, J.D. Crowe and Emmylou Harris, Skaggs has played a major roll in returning country music to a more traditional sound with more focus on acoustic instrumentation. In 1985, Skaggs was named “Entertainer of the Year” by the County Music Association.
- **Howard & Vestal Goodman**-leading the group, The Happy Goodman Family”, Howard and Vestal became one of the most highly acclaimed acts in Southern Gospel music. The recipients of three Grammy Awards, The Happy Goodman Family was inducted into the Gospel Music Hall of Fame in 1998.
- **Jerry Chestnut**-working both as a songwriter and performing artist, Chestnut has written many of the best known and most requested country music songs of all time. In 1996 Chestnut was inducted into the prestigious Nashville Songwriters Foundation Hall of Fame.

CLASSROOM ACTIVITIES

- Choose a favorite Kentucky Musician/Singer and create a production poster
- Create a costume design for your favorite Kentucky singer
- Write a fan letter to your favorite Kentucky musical performer

ELEMENTARY EXHIBIT GUIDE
AREA C: THE MUSEUM

OVERVIEW

As you make your way through the *Story Circle* room, you will be taken back in time to Kentucky’s infancy where only wilderness and a few brave settlers would be found. Then a brief, but informative movie will share the story of Kentucky’s musical heritage. As you continue through the *Museum*, you will follow timeline trail of Kentucky music from pre-settlement through to present day technology. Exhibit features include:

- Early Kentucky Landscape Mural
- “Backstage”
- Samples of musical instruments and artifacts
- “Brush Arbor” and “Front Porch” Reconstructions
- Early Radio and Recording Artifacts
- Kentucky Music History Timeline
- Wall of Stars including Costumes and memorabilia from Kentucky Artists

Academic Expectation	Content Connections
Historic Perspective 2.20	<ul style="list-style-type: none"> • Develop a chronological understanding of Kentucky’s early development • Explore different perspectives and interpretations of Kentucky by using primary and secondary sources, artifacts and timelines • Understand different groups throughout Kentucky’s history • Recognize how lifestyles and conditions have changed over time • Examine historical contributions of individuals and groups
Economics 2.18	<ul style="list-style-type: none"> • Understand that producers create goods and services and consumers make economic decisions and choices
Culture & Society 2.16 2.17	<ul style="list-style-type: none"> • Understand how culture in the U.S. has been influenced by languages, literature, arts, beliefs, and behaviors of diverse groups • Understand how social institutions in Kentucky’s past respond to human needs, structure, society, and influence behavior
Visual Art 2.23 2.26	<ul style="list-style-type: none"> • Investigate and communicate differences and commonalities in visual artistic expression from diverse cultures and periods • Use appropriate terminology to describe works of art (elements, principles, media, purpose, process)
Music 2.24 2.26	<ul style="list-style-type: none"> • Identify similarities and differences in musical elements used in the music of Native Americans, American Folk and west African • Examine effects of time, place and personality on music performance • Identify and discuss various styles of music
Drama 2.23 2.26	<ul style="list-style-type: none"> • Analyze production elements (scenery, costumes, sound, props) • Analyze performance elements (character, movement, vocal expression) • Identify similarities and differences between live audiences and viewing theatre, film, television

BACKGROUND

While various branches of Country Music certainly take center stage at the *Museum*, all forms of Kentucky music are honored. Kentucky’s contribution to American music, folk, gospel, bluegrass, country, and jazz is immeasurable. A walk through the *Museum* begins with the *Story Circle* room, depicting an early Kentucky landscape where musicians and storytellers share Kentucky’s music traditions. A “Backstage” tour emphasizes the role of *singer, song, stage* and *scene* while Kentucky’s musical heritage is broadcast on video.

An historic time-line, divided into ten-year increments, continues the tour with exhibits and dioramas depicting the environs of early Native Kentuckians to the beginnings of Kentucky music, minstrel and Civil War era

contributions to the first WHAS Radio studio in the 1940's to the "ballyhooing" vintage automobile. It was "ballyhooing" that promoted bluegrass and folk concerts on courthouse steps, town squares, and ball fields all over the Commonwealth. Along the way, visitors experience the sacred and religious music illustrated by the "Brush Arbor" revivals, and "Front Porch" music so sought after by archivists and scholarly collectors.

Highlights of the *Museum* include samples of early musical instruments and artifacts on loan from Berea College, music related gifts from individual collectors, early radio and recording memorabilia showcasing WHAS in Louisville, and a "Wall of Stars" displaying costumes, photos, and mementoes donated by Kentucky Artists representing their contributions to Kentucky music from the 1950's to the present.

CLASSROOM ACTIVITIES

- Create a poster advertising the Kentucky Music Hall of Fame and Museum
- Create a "peep box" illustrating a period of Kentucky Music

ELEMENTARY EXHIBIT GUIDE
AREA D: MUSIC ROOM AND RECORDING STUDIO

OVERVIEW

All ages will find the *Music Room* educational and fun. Interactive exhibits allow hand-on exploration of music theory, styles, and composition, as well as demonstrations of instruments and songs. Exhibit features includes:

- Interactive Music Exhibits
- Recording Studio
- Variety of Musical Instruments

Academic Expectation	Content Connections
Music 1.14 2.22 2.23	<ul style="list-style-type: none"> • Use elements of music • Recognize and develop musical elements • Use appropriate terminology to describe purpose of musical elements • Analyze how the elements of music are used in performing, listening to, and creating • Create music with developmentally appropriate performance techniques, practices, and music elements to communicate ideas and emotions • Create a simple composition using music elements • Create products to demonstrate music from diverse cultures, periods, styles • Recognize and identify families of instruments
Drama 2.22 2.23	<ul style="list-style-type: none"> • Analyze production elements (scenery, costumes, sound, props) • Analyze performance elements (character, movement, vocal expression) • Identify similarities and differences between live audiences, and viewing theatre, film, television

BACKGROUND

The *Music Room* is designed to allow for a fun and education experience for all ages. Visitors can see, touch, hear and perform with a variety of hand-on interactive exhibits, funded by the Steel-Reese Foundation of New York, while exploring the elements of music. The exhibits allow visitors to demonstrate how **melody** and **harmony** are created; create a new composition or vary a familiar tune; demonstrate how different instruments create different sound waves through **pitch** and **timbre** or change the **beat** and **tempo** of an old favorite like “The Kentucky Waltz.” Since religion, family, region and culture influence musical style, a demonstration of Blues, Rock-n-Roll, Opera, Sacred, Bluegrass, and Folk techniques helps to illustrate the factors in the evolution of music.

The *Recording Studio* allows visitors to take a pre-recorded track of music and add their own vocals demonstrating the recording process. Instruments on display and for visitor use are provided by the Don and Vera Evans family of Harrison, Ohio, and are demonstrated and defined by a costumed guide.

CLASSROOM ACTIVITIES

- Demonstrate a “live radio broadcast”; include musicians, singers, announcers, comedians, etc.
- Videotape your performance and write a critique/review

MIDDLE LEVEL EXHIBIT GUIDE
AREA A: THE PORTAL

OVERVIEW

The “*Portal*” of the 16,600 square foot facility is the John Lair, founder of the Renfro Valley Barn Dance, renovated horse stables. It is now home to a quaint stage where you may just find a live performance from a visitor or one of many Kentucky artists sharing a song with a guest. Exhibit features include:

- Renovation Design
- Kentucky Map Identifying Artist’s Home County
- Original Horse Stables
- John Lair Sculpture
- Museum Shop

Academic Expectation	Content Connections
Visual Arts 2.23 2.24 2.26	<ul style="list-style-type: none"> • Analyze and/or interpret how various combinations of art elements and principles of design help artists express ideas, thoughts, and feeling. • Analyze and interpret media (e.g., paint, fiber, ink, clay) and/or processes (e.g., ceramics, painting, sculpture) various artists use to create works of art.
Speaking, Listening, Observing 1.3 1.4 1.5	<ul style="list-style-type: none"> • Interpret meaning from verbal/non-verbal cues by applying appropriate listening and observing strategies • Adjust listening and observing strategies for specific situations and purposes • Collaborate to gather and interpret information from observing, speaking, and listening • Applying listening, speaking, and observing skills to conduct authentic inquiry tasks
Inquiry 1.1	<ul style="list-style-type: none"> • Explore and use research tools to gather ideas and information

BACKGROUND

Upon entering the “*Portal*” area of the Kentucky Music Hall of Fame and Museum, visitors are greeted by the interior of the original John Lair, Renfro Valley Barn Dance founder, horse stables now listed on the National Register of Historic Places. Built in 1945, the structure retains original materials recycled during renovation by the CMW Architect Firm of Lexington, Kentucky, which is also responsible for the Hall of Fame and Museum design additions and Hacker Brothers Construction of Corbin, Kentucky for building construction.

Design components of interest include plank flooring, which appears to be weathered wood but is actually detailed concrete, three of the original twelve horse stalls which serve as display areas for music-related merchandise in the Museum Shop, wall cabinets displaying vintage sheet music, reproduction LP records which list monetary benefactors and a small performance area reminiscent of a “Barn Dance” stage.

The highlight of the “*Portal*” is the large wooden map representing Kentucky displaying the home county of various musicians, songwriters, singers and music entertainers, past and present. Also, seen in the “*Portal*” area is a sculpted bust of John Lair, by London, Kentucky artist, Jim Handy. Mr. Handy researched various photographic images to create the likeness.

CLASSROOM ACTIVITIES

- Develop a Kentucky map identifying artist’s home county
- After you visit, write letters to your principal describing what you learned

MIDDLE LEVEL EXHIBIT GUIDE
AREA B: THE HALL OF FAME

OVERVIEW

Stroll through the *Hall of Fame* and see exhibits of the inaugural inductees while their music plays around you along with Lionel Hampton who received the Governor’s Lifetime Achievement Award.

Exhibit features include:

- Artifacts Display Cases
- Artist’s Photo Portraits and Facts
- Artist’s Performance Posters

Academic Expectation	Content Connections
Visual Arts 2.23	<ul style="list-style-type: none"> • Analyze, interpret, and evaluate how elements of art (line, shape, color, form, texture, space, value) and principles of design (balance, emphasis, pattern, repetition, contrast, movement, rhythm, proportion, unity) are used to create works of art.
Music 2.23	<ul style="list-style-type: none"> • Analyze, interpret, and evaluate own and others’ compositions and performances, using musical terms and elements to describe technical and expressive qualities.

BACKGROUND

The *Hall of Fame*, which serves as a connector between refurbished Lair stables and the *Museum*, houses exhibit cases for instruments, artifacts, costumes, and memorabilia representing each of the music inductees. Items on loan or donated to the *Hall of Fame* are artistically arranged by Exhibit Design, Jack Rouse Associates of Cincinnati, as are all the exhibit fabrications throughout the *Museum*. The logo design, prominently displayed throughout the facility, is by Malcolm Greer.

Artist’s performance style poster graphics are printed in colored acrylic plaques giving the appearance of vintage show bills. Plaques are arranged on glass walls allowing colored light to shine through from the outside mimicking stained glass. The plaques are permanent, even as additional inductees are included. Large Photo Portraits adorn the space accompanied by biographical facts and accomplishments of each *Hall of Fame* inductee.

Inductees for 2004 include:

- **Billy Vaughn**-one of the most popular orchestra leaders and pop music arrangers of the 1950s and 60s. Beginning with “Melody of Love” in 1954, Vaughn had a string of easy listening hit singles that continued for over a decade.
- **J.D. Crowe**-known for combining the sounds of Bluegrass, Rock & Roll and Blues into a very distinctive style of his own. The revolutionary sound of his band, The New South, marked a turning point in the sound of Bluegrass music.
- **Coon Creek Girls**-this all girl string band was broadcast over many radio and live shows. A highlight of their career was performing at the White House when President Franklin Roosevelt and First Lady Eleanor Roosevelt hosted a visit by King George VI and Queen Elizabeth of Great Britain.
- **Boots Randolph**-a very influential saxophone instrumentalist in the country music field making brass a part of the “Nashville Sound”. He is perhaps best known for his multimillion selling, “Yakety Sax”.
- **Ricky Skaggs**-having worked and performed with Ralph Stanley, J.D. Crowe and Emmylou Harris, Skaggs has played a major roll in returning country music to a more traditional sound with more focus on acoustic instrumentation. In 1985, Skaggs was named “Entertainer of the Year” by the County Music Association.
- **Howard & Vestal Goodman**-leading the group, The Happy Goodman Family”, Howard and Vestal became one of the most highly acclaimed acts in Southern Gospel music. The recipients of three Grammy Awards, The Happy Goodman Family was inducted into the Gospel Music Hall of Fame in 1998.

- **Jerry Chestnut**-working both as a songwriter and performing artist, Chestnut has written many of the best known and most requested country music songs of all time. In 1996 Chestnut was inducted into the prestigious Nashville Songwriters Foundation Hall of Fame.

CLASSROOM ACTIVITIES

- Write and illustrate a short biography on a Kentucky Musician
- Create a performance poster for your favorite Kentucky singer

MIDDLE LEVEL EXHIBIT GUIDE
AREA C: THE MUSEUM

OVERVIEW

As you make your way through the *Story Circle* room, you will be taken back in time to Kentucky’s infancy where only wilderness and a few brave settlers would be found. Then a brief, but informative movie will share the story of Kentucky’s musical heritage. As you continue through the *Museum*, you will follow timeline trail of Kentucky music from pre-settlement through to present day technology. Exhibit features include:

- Early Kentucky Landscape Mural
- “Backstage”
- Samples of musical instruments and artifacts
- “Brush Arbor” and “Front Porch” Reconstructions
- Early Radio and Recording Artifacts
- Kentucky Music History Timeline
- Wall of Stars including Costumes and memorabilia from Kentucky Artists

Academic Expectation	Content Connections
Visual Art 2.24 2.26	<ul style="list-style-type: none"> • Analyze and interpret how culture, purpose, style, and history influence the way artists express ideas, thoughts, and feelings • Analyze characteristics and purposes of art that represents various cultures, historical periods, and artists. • Analyze contributions of various cultures and periods to visuals arts. • Analyze influences of time, place, and personality on art forms and practices.
Music 2.24 2.26	<ul style="list-style-type: none"> • Analyze, interpret, and evaluate how factors such as time, place and ideas are reflected in music. • Analyze, interpret, and evaluate compositions and/or performances from diverse cultures, periods, and styles
Theatre 2.26	<ul style="list-style-type: none"> • Analyze and interpret commonality of character, situation, and motive in various cultures and historical and historical periods.
Historical Perspective 2.20	<ul style="list-style-type: none"> • Use of a variety of tools to explore the interpretive nature of United States • Develop a chronological understanding of the early history of the United States • Examine the impact of significant individuals and groups in early United States history
Geography 2.19	<ul style="list-style-type: none"> • Examine patterns of human movement, settlement, and interaction in early American history and investigate how these patterns influenced culture and society in the United States • Examine how early United States history was influenced by the physical environment
Culture and Society 2.16	<ul style="list-style-type: none"> • Examine how culture in the United States has been influenced by language, literature, arts, beliefs, and behavior of people in America’s past • Investigate how social institutions addressed human needs in early United States history

BACKGROUND

While various branches of Country Music certainly take center stage at the *Museum*, all forms of Kentucky music are honored. Kentucky’s contribution to American music, folk, gospel, bluegrass, country, and jazz is immeasurable. A walk through the *Museum* begins with the *Story Circle* room, depicting an early Kentucky landscape where musicians and storytellers share Kentucky’s music traditions. A “Backstage” tour emphasizes the role of *singer, song, stage* and *scene* while Kentucky’s musical heritage is broadcast on video.

An historic time-line, divided into ten-year increments, continues the tour with exhibits and dioramas depicting the environs of early Native Kentuckians to the beginnings of Kentucky music, minstrel and Civil War era contributions to the first WHAS Radio studio in the 1940’s to the “ballyhooing” vintage automobile. It was “ballyhooing” that promoted bluegrass and folk concerts on courthouse steps, town squares, and ball fields all over

the Commonwealth. Along the way, visitors experience the sacred and religious music illustrated by the “Brush Arbor” revivals, and “Front Porch” music so sought after by archivists and scholarly collectors.

Highlights of the *Museum* include samples of early musical instruments and artifacts on loan from Berea College, music related gifts from individual collectors, early radio and recording memorabilia showcasing WHAS in Louisville, and a “Wall of Stars” displaying costumes, photos, and mementoes donated by Kentucky Artists representing their contributions to Kentucky music from the 1950’s to the present.

CLASSROOM ACTIVITIES

- Create a poster advertising the Kentucky Music Hall of Fame and Museum
- Write a poem or short story describing Kentucky music
- Create a “Backstage” area diorama

MIDDLE LEVEL EXHIBIT GUIDE
AREA D: MUSIC ROOM AND RECORDING STUDIO

OVERVIEW

All ages will find the *Music Room* educational and fun. Interactive exhibits allow hand-on exploration of music theory, styles, and composition, as well as demonstrations of instruments and songs. Exhibit features includes:

- Interactive Music Exhibits
- Recording Studio
- Variety of Musical Instruments

Academic Expectation	Content Connections
Music 1.14 2.22 2.23	<ul style="list-style-type: none"> • Demonstrate an understating of elements of music (rhythm, melody, form, timbre, harmony, temp, dynamics) through singing, instrument playing, moving, listening, reading, writing, and creating. • Analyze, interpret, and evaluate musical elements • Read and perform, vocally and instrumentally, increasingly complex melodic and rhythmic patterns in both treble and bass clefs. • Perform and/or compose music that demonstrates ideas and emotions through performance techniques, practices, and music concepts. • Create and notate a complex composition incorporating the elements of music. • Analyze, interpret, and evaluate own and others’ compositions and performances using musical terms and elements to describe technical and expressive qualities.

BACKGROUND

The *Music Room* is designed to allow for a fun and education experience for all ages. Visitors can see, touch, hear and perform with a variety of hand-on interactive exhibits, funded by the Steel-Reese Foundation of New York, while exploring the elements of music. The exhibits allow visitors to demonstrate how **melody** and **harmony** are created; create a new composition or vary a familiar tune; demonstrate how different instruments create different sound waves through **pitch** and **timbre** or change the **beat** and **tempo** of an old favorite like “The Kentucky Waltz.” Since religion, family, region and culture influence musical style, a demonstration of Blues, Rock-n-Roll, Opera, Sacred, Bluegrass, and Folk techniques helps to illustrate the factors in the evolution of music.

The *Recording Studio* allows visitors to take a pre-recorded track of music and add their own vocals demonstrating the recording process. Instruments on display and for visitor use are provided by the Don and Vera Evans family of Harrison, Ohio, and are demonstrated and defined by a costumed guide.

CLASSROOM ACTIVITIES

- Dramatize a “live radio broadcast”; include musicians, singers, announcers, comedians, etc.
- Videotape your performance and write a critique or review

HIGH SCHOOL EXHIBIT GUIDE
AREA A: THE PORTAL

OVERVIEW

The “*Portal*” of the 16,600 square foot facility is the John Lair, founder of the Renfro Valley Barn Dance, renovated horse stables. It is now home to a quaint stage where you may just find a live performance from a visitor or one of many Kentucky artists sharing a song with a guest. Exhibit features include:

- Renovation Design
- Kentucky Map Identifying Artist’s Home County
- Original Horse Stables
- John Lair Sculpture
- Museum Shop

Academic Expectation	Content Connections
Visual Arts 1.13 2.22 2.26	<ul style="list-style-type: none"> • Describe how visual artists use elements of art (line, shape, color, form, texture, space, value), principles of design (balance, emphasis, pattern, repetition, contrast, movement, rhythm, proportion, unity), processes (e.g., drawing, painting, textiles), media (e.g., paint, fibers, wood, clay), and techniques to create art works.
Vocational Studies 2.36 2.37	<ul style="list-style-type: none"> • Short-and long-term career goals should be based on an individual’s personality, values, interests, aptitudes, abilities, and postsecondary opportunities. • There are basic academic skills (e.g., communication, research, math, sciences) and preparation levels (e.g., past work experience and training, leadership, certification) required or useful for various jobs and careers. • Life-long earning potential, job options, and job satisfaction are generally related to the amount and kind of education training of the worker.

BACKGROUND

Upon entering the “*Portal*” area of the Kentucky Music Hall of Fame and Museum, visitors are greeted by the interior of the original John Lair, Renfro Valley Barn Dance founder, horse stables now listed on the National Register of Historic Places. Built in 1945, the structure retains original materials recycled during renovation by the CMW Architect Firm of Lexington, Kentucky, which is also responsible for the Hall of Fame and Museum design additions and Hacker Brothers Construction of Corbin, Kentucky for building construction.

Design components of interest include plank flooring, which appears to be weathered wood but is actually detailed concrete, three of the original twelve horse stalls which serve as display areas for music-related merchandise in the Museum Shop, wall cabinets displaying vintage sheet music, reproduction LP records which list monetary benefactors and a small performance area reminiscent of a “Barn Dance” stage.

The highlight of the “*Portal*” is the large wooden map representing Kentucky displaying the home county of various musicians, songwriters, singers and music entertainers, past and present. Also, seen in the “*Portal*” area is a sculpted bust of John Lair, by London, Kentucky artist, Jim Handy. Mr. Handy researched various photographic images to create the likeness.

CLASSROOM ACTIVITIES

- Design a marketable music related product with a Kentucky theme
- Create a tourist brochure for the Kentucky Music Hall of Fame and Museum

HIGH SCHOOL EXHIBIT GUIDE
AREA B: THE HALL OF FAME

OVERVIEW

Stroll through the *Hall of Fame* and see exhibits of the inaugural inductees while their music plays around you along with Lionel Hampton who received the Governor’s Lifetime Achievement Award. Exhibit features include:

- Artifacts Display Cases
- Artist’s Photo Portraits and Facts
- Artist’s Performance Posters

Academic Expectation	Content Connections
Music 1.14 2.22 2.26	<ul style="list-style-type: none"> • Describe how musicians apply basic knowledge, skills, and interpretations in musical performances.
Vocational Studies 2.38	<ul style="list-style-type: none"> • A career portfolio should include: <ul style="list-style-type: none"> ▪ Self-assessment of interests, aptitudes and abilities ▪ A resume ▪ Letters of reference ▪ Certification of training ▪ Samples of work • The following skills are needed to seek, obtain, maintain, and change jobs/careers and postsecondary opportunities: <ul style="list-style-type: none"> ▪ Continue a job search ▪ Writing a letter of application ▪ Completing an application ▪ Securing a letter of reference ▪ Preparing a resume ▪ Knowing interview techniques <ul style="list-style-type: none"> • Learn about employer/job • Make a list of questions to ask • Prepare materials to take • Prepare answers to questions you may be asked ▪ Writing a follow-up letter ▪ Following proper procedure when changing jobs (e.g., give advance notice, write a letter of resignation)

BACKGROUND

The *Hall of Fame*, which serves as a connector between refurbished Lair stables and the *Museum*, houses exhibit cases for instruments, artifacts, costumes, and memorabilia representing each of the music inductees. Items on loan or donated to the *Hall of Fame* are artistically arranged by Exhibit Design, Jack Rouse Associates of Cincinnati, as are all the exhibit fabrications throughout the *Museum*. The logo design, prominently displayed throughout the facility, is by Malcolm Greer.

Artist’s performance style poster graphics are printed in colored acrylic plaques giving the appearance of vintage show bills. Plaques are arranged on glass walls allowing colored light to shine through from the outside mimicking stained glass. The plaques are permanent, even as additional inductees are included. Large Photo Portraits adorn the space accompanied by biographical facts and accomplishments of each *Hall of Fame* Inductee.

Inductees for 2004 include:

- **Billy Vaughn**-one of the most popular orchestra leaders and pop music arrangers of the 1950s and 60s. Beginning with “Melody of Love” in 1954, Vaughn had a string of easy listening hit singles that continued for over a decade.
- **J.D. Crowe**-known for combining the sounds of Bluegrass, Rock & Roll and Blues into a very distinctive style of his own. The revolutionary sound of his band, The New South, marked a turning point in the sound of Bluegrass music.
- **Coon Creek Girls**-this all girl string band was broadcast over many radio and live shows. A highlight of their career was performing at the White House when President Franklin Roosevelt and First Lady Eleanor Roosevelt hosted a visit by King George VI and Queen Elizabeth of Great Britain.
- **Boots Randolph**-a very influential saxophone instrumentalist in the country music field making brass a part of the “Nashville Sound”. He is perhaps best known for his multimillion selling, “Yakety Sax”.
- **Ricky Skaggs**-having worked and performed with Ralph Stanley, J.D. Crowe and Emmylou Harris, Skaggs has played a major roll in returning country music to a more traditional sound with more focus on acoustic instrumentation. In 1985, Skaggs was named “Entertainer of the Year” by the County Music Association.
- **Howard & Vestal Goodman**-leading the group, “The Happy Goodman Family”, Howard and Vestal became one of the most highly acclaimed acts in Southern Gospel music. The recipients of three Grammy Awards, The Happy Goodman Family was inducted into the Gospel Music Hall of Fame in 1998.
- **Jerry Chestnut**-working both as a songwriter and performing artist, Chestnut has written many of the best known and most requested country music songs of all time. In 1996 Chestnut was inducted into the prestigious Nashville Songwriters Foundation Hall of Fame.

CLASSROOM ACTIVITIES

- Create a resume for a Hall of Fame inductee
- Create a performance poster for a Kentucky Music artist
- Write a letter to a Kentucky music artist requesting an item for display

HIGH SCHOOL EXHIBIT GUIDE
AREA C: THE MUSEUM

OVERVIEW

As you make your way through the *Story Circle* room, you will be taken back in time to Kentucky’s infancy where only wilderness and a few brave settlers would be found. Then a brief, but informative movie will share the story of Kentucky’s musical heritage. As you continue through the *Museum*, you will follow timeline trail of Kentucky music from pre-settlement through to present day technology. Exhibit features include:

- Early Kentucky Landscape Mural
- “Backstage”
- Samples of musical instruments and artifacts
- “Brush Arbor” and “Front Porch” Reconstructions
- Early Radio and Recording Artifacts
- Kentucky Music History Timeline
- Wall of Stars including Costumes and memorabilia from Kentucky Artists

Academic Expectation	Content Connections
Music 1.14 2.22 2.23 2.26	<ul style="list-style-type: none"> • Analyze, interpret, and evaluate various aspects of musical performances. • Describe various styles and purposes of music and explain how music reflects historical and cultural influences.
Vocational Studies 2.36 2.37	<ul style="list-style-type: none"> • Career planning has an impact on future physical, mental, and emotional well-being. • Work has social and economic impacts on the individual, family, and society • Job and career opportunities vary at the state, national, and international levels based on demand for goods and services and available resources. • Work habits/ethics (e.g., cooperation, respect, time management, individual/tem responsibilities, dependability) can impact the success of a group.
Theatre 2.26	<ul style="list-style-type: none"> • Analyze and interpret commonality of character, situation, and motive in various cultures and historical and historical periods.
Historical Perspective 2.20	<ul style="list-style-type: none"> • Use of a variety of tools to explore the interpretive nature of United States • Develop a chronological understanding of the early history of the United States • Examine the impact of significant individuals and groups in early United States history
Geography 2.19	<ul style="list-style-type: none"> • Examine patterns of human movement, settlement, and interaction in early American history and investigate how these patterns influenced culture and society in the United States • Examine how early United States history was influenced by the physical environment
Culture and Society 2.16	<ul style="list-style-type: none"> • Examine how culture in the United States has been influenced by language, literature, arts, beliefs, and behavior of people in America’s past • Investigate how social institutions addressed human needs in early United States history

BACKGROUND

While various branches of Country Music certainly take center stage at the *Museum*, all forms of Kentucky music are honored. Kentucky’s contribution to American music, folk, gospel, bluegrass, country, and jazz is immeasurable. A walk through the *Museum* begins with the *Story Circle* room, depicting an early Kentucky landscape where musicians and storytellers share Kentucky’s music traditions. A “Backstage” tour emphasizes the role of *singer, song, stage and scene* while Kentucky’s musical heritage is broadcast on video.

An historic time-line, divided into ten-year increments, continues the tour with exhibits and dioramas depicting the environs of early Native Kentuckians to the beginnings of Kentucky music, minstrel and Civil War era contributions to the first WHAS Radio studio in the 1940’s to the “ballyhoing” vintage automobile. It was

“ballyhooing” that promoted bluegrass and folk concerts on courthouse steps, town squares, and ball fields all over the Commonwealth. Along the way, visitors experience the sacred and religious music illustrated by the “Brush Arbor” revivals, and “Front Porch” music so sought after by archivists and scholarly collectors.

Highlights of the *Museum* include samples of early musical instruments and artifacts on loan from Berea College, music related gifts from individual collectors, early radio and recording memorabilia showcasing WHAS in Louisville, and a “Wall of Stars” displaying costumes, photos, and mementoes donated by Kentucky Artists representing their contributions to Kentucky music from the 1950’s to the present.

CLASSROOM ACTIVITIES

- Create a Kentucky Music exhibit or diorama
- Research the financial impact the music industry has on Kentucky; the United States

HIGH SCHOOL EXHIBIT GUIDE
AREA D: MUSIC ROOM AND RECORDING STUDIO

OVERVIEW

All ages will find the *Music Room* educational and fun. Interactive exhibits allow hand-on exploration of music theory, styles, and composition, as well as demonstrations of instruments and songs. Exhibit features includes:

- Interactive Music Exhibits
- Recording Studio
- Variety of Musical Instruments

Academic Expectation	Content Connections
Theatre 2.23 2.26	<ul style="list-style-type: none"> • Apply knowledge and skills of elements of production (set, lighting, costumes, sound, spectacle) to interpret dramatic works. • Apply knowledge and skills of elements of performance (e.g., monologue, dialogue, soliloquy, character motivation, voice, sensory recall) to interpret dramatic works. • Describe and compare interactions between performing (e.g., theatre, dance, music) and visual artists and their audiences.
Vocational Studies 2.36	<ul style="list-style-type: none"> • The job market changes as a result of scientific advancements and the increased use of technology (e.g., robotics replacing workers). • The advantages and disadvantages of jobs and careers in various occupational areas should be evaluated (e.g., preparation, salary, benefits, demand of job, location, work environment). • There are various postsecondary options (e.g., technical or vocational schools, 2-year colleges, 4-year colleges, apprenticeships, military service) to be considered when selecting or preparing for employment or a career path.

BACKGROUND

The *Music Room* is designed to allow for a fun and education experience for all ages. Visitors can see, touch, hear and perform with a variety of hand-on interactive exhibits, funded by the Steel-Reese Foundation of New York, while exploring the elements of music. The exhibits allow visitors to demonstrate how **melody** and **harmony** are created; create a new composition or vary a familiar tune; demonstrate how different instruments create different sound waves through **pitch** and **timbre** or change the **beat** and **tempo** of an old favorite like “The Kentucky Waltz.” Since religion, family, region and culture influence musical style, a demonstration of Blues, Rock-n-Roll, Opera, Sacred, Bluegrass, and Folk techniques helps to illustrate the factors in the evolution of music.

The *Recording Studio* allows visitors to take a pre-recorded track of music and add their own vocals demonstrating the recording process. Instruments on display and for visitor use are provided by the Don and Vera Evans family of Harrison, Ohio, and are demonstrated and defined by a costumed guide.

CLASSROOM ACTIVITIES

- After your visit, write an article for your school paper
- Design an interactive (or board) game based on Kentucky music
- Write a radio broadcast script related to Kentucky music

CAREER OPTIONS REPRESENTED AT THE KENTUCKY MUSIC HALL OF FAME AND MUSEUM

VISUAL ARTS

Architecture
Landscape Design
Fashion/Costume Design
Furniture/Industrial
Design
Interior Design
Graphics
Textile Design
Illustrator
Gallery/Museum Curator
Photography
Education
Historical Reproduction
Fine Art
Painting/Sculpture
Animation/Videography

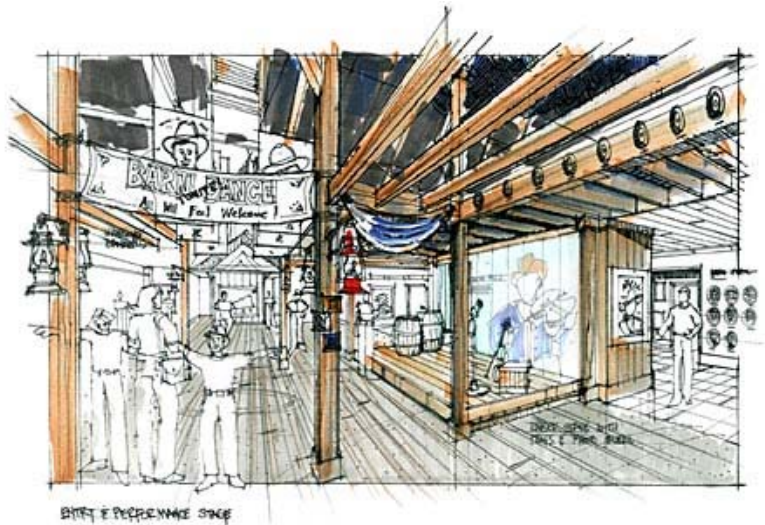
DRAMA/THEATRE

Actor/Actress
Playwright/Screenwriter
Producer
Director
Designer
Scene Painters
Draftsman
Costume Construction
Hair/Wig Stylist
Make-up Artist
Stage Carpenter/
Construction
Wardrobe
Stage Crew
Sound/Special Effects
Stage Manager
Business Manager
Publicity Manager

Box Office
House Manager
Educator

MUSIC

Musician
Vocalist
Composer/Songwriter
Lyricist
Music Director
Producer
Sound Design/Technician
Editor
Publisher
Recording Engineer
Educator
Choir Director
Advertising
Talent Scout
Business Manager
Marketing
Tour Publicist
Sales
Studio Director
Film Scoring



SUGGESTED READING

- *An Appalachian Lullaby*, Paulette Livers Lambert
- *The Ballad Book of John Jacob Niles*, John Jacob Niles
- *Can't You Hear Me Callin': The Life of Bill Monroe, Father of Bluegrass*, Richard D. Smith
- *Coon Creek Girl*, Lilly May Ledford
- *Dulcimer Maker*, The Craft of Homer Ledford, R. Gerald Alvey
- *The Everly Brothers: Walk on By*, Roger White
- *Girl Singer: An Autobiography*, Rosemary Clooney and Joan Barthel
- *Hamp: An Autobiography*, Lionel Hampton
- *It All Happened in Renfro Valley*, Pete Stamper
- *Music in Lexington Before 1840*, Joy Carden
- *My Mamma Had a Dancing Heart*, Libba Moore Gray
- *Old Kentucky Fiddle Tunes*, Jeff Todd Titon
- *On the Air...with John Lair*, Compiled & Annotated by Ann Lair Henderson
- *Radio's 'Kentucky Mountain Boy' Bradley Kincaid*, Loyal Jones
- *Singing Family of The Cumberlands*, Jean Ritchie
- *Singing The Glory Down – Amateur gospel music in South Central Kentucky 1900-1990*, William Lynwood Montell
- *Still Women Enough: A Memoir*, Loretta Lynn & Patsi Bale Cox
- *When Uncle Took The Fiddle*, Libba Moore Gray

EDUCATION CONSULTANT & DEVELOPMENT

H. Allen Pensol
Basic Arts Coordinator/Performance Specialist
Rockcastle County Schools
Mt. Vernon, Kentucky

Jamie A. McFerron
Layout/Word Processing
Rockcastle County Schools
Mt. Vernon, Kentucky



The Kentucky Music Hall of Fame and Museum Provides Equal Education and Employment Opportunities